

IFRJ

by Bernadeta Wahyu Astri Pratita

Submission date: 08-Apr-2023 01:50AM (UTC+0900)

Submission ID: 1881322200

File name: isi_jurnal_IFRJ.pdf (320.08K)

Word count: 3477

Character count: 18290

The effect of salt concentration and fermentation time on pH value, total acidity and microbial characteristic of pickled ginger (*Zingiber officinale* Rosc.)

*Susilowati, S., Laia, S. and Purnomo, H.

Department of Agricultural Product Technology, Faculty of Agriculture, Catholic University Widya Karya, Malang, Jawa Timur, Indonesia.

Article history

Received: 21 July 2017
Received in revised form:
26 February 2018
Accepted: 8 March 2018

Keywords

Ginger
Fermentation
LAB
Identification
16S rRNA

Abstract

Spontaneous fermentation of ginger are very popular in China and Japan and the product are known as pickled ginger, in Indonesia its popularity is still limited in certain society, but more increasing with the present of more Japanese cuisine restaurants especially in metropolitan cities. Hence a study on the effect of salt concentration and fermentation time on pH value, total acidity number and microbial characteristic of pickled ginger (*Zingiber officinale* Rosc.) was conducted. Completely Randomized Design was used in this study with two factors namely salt (NaCl) concentrations (2.5, 5.0 and 7.5 % w/w) and fermentation time : 5 and 10 days, and this experiment was replicated three times, while the parameters observed were pH value, total acidity, Lactic Acid Bacteria total counts and characterisation and identification of lactic acid bacteria of selected pickled ginger sample using index de Garmo was carried out by 16SrRNA gene sequencing analysis. The selected sample was the one prepared using 2.5% w/w salt and 5 days fermentation at 26°C with pH value of 3.40, total acidity 0.92% and lactic Acid bacteria total counts of 7.56×10^6 CFU/ml. Based on 16S rRNA gene sequencing analysis and similarity by Neighbor Joining (NJ) method with phylogenetic tree construction, the lactic acid bacteria of selected pickled ginger identified were *Lactobacillus plantarum* strain BM4 and *Lactobacillus plantarum* LOCK 0991 with similarity of 86%.

© All Rights Reserved

Introduction

Ginger (*Zingiber officinale* Rosc) rhizome is one of most important spices used widely in Indonesian cuisine as well as in other countries and also well known as one of traditional herbal medicine ingredients. The volatile aromatic components give a spicy, pungent and pleasant smell and therefore ginger rhizome either in fresh, dried or powder form are used as spices and food additives in a number of food and beverages. Gingerols were found as the most abundant active components which mainly consist of gingerol [5-hydroxy-1-(4-hydroxy-3-methoxyphenyl) decan-3 (Purnomo *et al.*, 2010; Singh *et al.*, 2014; Zadeh and Kor, 2014).

Traditional or spontaneous fermentation of vegetables and fruits have been practised for centuries and some of these fermented products as reported by Aryanta (2000); Tamang (2011); Law *et al.* (2011) and Sulistiani *et al.* (2014). are sauerkraut (European countries and United States of America), kimchi (South Korea), jiang gua (pickled cucumber – Taiwan), sayur asin (fermented mustard cabbage leaves – Indonesia), tempeh, natto (fermented soya beans – Indonesia, Japan), tuak, arak or toddy (fermented fresh palm sap – Indonesia, Malaysia),

tape ketan, khoumak (fermented glutinous rice – Indonesia, Thailand), yan jiang, gari (fermented sliced young ginger rhizome – Taiwan, Japan).

Yeh *et al.* (2014) noted that in some other countries ginger rhizome are not only used as spices and condiment in cooking or to flavor foods and beverages, but it has also been used as raw material of fermented sliced or pickled ginger (Chang *et al.*, 2011) and ginger candy (Nath *et al.*, 2013). Japanese pickled young ginger rhizome are usually consumed with sushi and known as gari, and the thin sliced gari are bright pink with an impressive flavor and taste (Chou, 2003), while pickled young ginger Yan jiang in Taiwan according to Chang *et al.* (2011) were prepared by adding salt and sugar in the amount of 30 – 60 g.kg⁻¹ and fermented for 3 – 5 days at 6° – 10°C. While Setyaningsih (1993) noted that in Indonesia pickled ginger are prepared using sliced ginger (*Zingiber officinale* var. *Officinatum*) fermented in brine solution of 10% cooking salt and 2% cane sugar in the ratio 1 : 2 at ambient temperature (25° – 30°C) for 10 days. As information on quality traits of pickled ginger in Indonesia are very limited, therefore the aims of this study were to investigate the pH value, total acidity and microbial characteristic as part of quality traits of pickled ginger prepared using

*Corresponding author.
Email: sr_susi@yahoo.co.id

different salt concentration and fermentation time.

Material and Methods

Sample preparation

The sample preparation was following the method as described by Setyaningsih (1993) with slightly modification. Ginger rhizome of 4 – 5 months old were obtained from ginger farmer in Batu, Jawa Timur were washed thoroughly using tap water to clean from all kind of dirt before peeled and sliced with thickness of about 0.5 mm. The sliced ginger rhizome (200 g) were then packed in a glass jar and added with brine solution which prepared using cooking salt (2.0%, 5.0% and 7.5% weight per volume) and cane sugar (2% weight per volume). The ratio of sliced ginger and brine solution were 1 : 2, and this mixture were then fermented at room temperature (25° – 30°C) for 5 and 10 days. The pH value, total acidity and total lactic acid bacteria counts were determined after 5 and 10 days after fermentation. While the microbial characteristic of pickled ginger were measured from the best sample after selected using index effectivity according de Garmo (1994).

pH measurement

The measurement of pH values of fermenting liquor were performed following the method as described in AOAC (2000) using pH meter (S426237).

Total acidity measurement

The total acidity was determined by titrating 10 ml of fermenting liquor in 50 ml Erlenmeyer flask using 0.1N NaOH and 1% phenolphthalein as the indicator, the total acidity are expressed as lactic acid (AOAC, 2000)

Lactic acid bacteria total counts

Total Plate Count of lactic acid bacteria were conducted following the method as described by Hadioetomo (1993), 10 ml of fermented ginger liquor were diluted in 90ml phosphate buffer and 1ml were then pipetted onto MRS (de Man, Rogosa, and Sharpe)-agar and incubated at 37°C for 2 days before counting the colony formed.

Isolation and identification of lactic acid bacteria

The isolation and identification of lactic acid bacteria of pickled ginger liquor were carried out following the method as described by Yelnetty (2014). The isolated lactic acid bacteria from selected pickled ginger sample using effectivity index de Garmo (1994) was identified by analysis of the

16SrRNA sequence.

Isolation of lactic acid bacteria.

5 ml of pure bacteria culture were put into sterile eppendorf (1 : 5) and centrifuged for 5 minutes at 13,000 rpm. The obtained sediments were added with 410 µl T₁₀E₁ buffer (10 mM tris HCl : 1mM ethylene diamine tetra acetic acid, pH 8), then the sediments were homogenized and 50 µl lysozyme was added and resuspended before incubation in water bath at 37°C for 1 hour with agitation every 15 minutes. Proteinase enzyme (20 µl) was added to the culture and incubated in water bath at 37°C for 1 hour with agitation every 15 minutes. Furthermore, 50 µl of Sodium Dodesil Sulfat (SDS) 10% was added and incubated at 65°C for 1 hour with agitation every 30 minutes. After incubation 167 ml NaCl 5M was added and reincubated at 65°C for 1 hour with agitation during incubation. The cell culture after incubation were added with ± 400 µl cold chloroform and incubated again at ambient temperature for 30 minutes with agitation every 10 minutes. Then the cell culture were centrifuged at 13,000 rpm for 10 minutes and supernatant were transferred into a new eppendorf and isopropanol (2D-propanol) as much as 10 times were added and agitated ± 50 times before incubated at 20°C for 12 hours. After incubation it was centrifuged at 13,000rpm for 5 minutes and the supernatant were discarded and 100 µl of cold ethanol 70% was added continued with another centrifugation before ethanol were discarded and the sediments were aerated dried and after drying 80µl T₁₀E₁ Buffer 20 buffer was added to the dried sediments.

DNA purification, DNA electrophoresis, Polymerase Chain Reaction (PCR) amplification and sequencing purification uses the method described by Leonard (1998).

DNA purification

The DNA of isolated bacteria were purified using phenol-chloroform method i.e. 100 µl mixed with T₁₀E₁ buffer solution and phenol-chloroform (1 : 1) then homogenised and centrifuged at 13,000 rpm for 10 minutes. The supernatant replaced to a new eppendorf tube and added with 1 x volume of Na-acetate 3M and 2 x volume absolute ethanol then incubated at 20°C for 5 minutes. The sediment obtained were added with 100 µl ethanol 70% before recentrifuged at 13,000 rpm for 5 minutes. Furthermore the sediments obtained were air dried and then added with 20 µl T₁₀E₁ buffer solution before determined using DNA electrophoresis method.

1 DNA electrophoresis

DNA result of isolation were observed by electrophoresis using 0.8% agarose at 100 volt for 45 minutes, then observed under UV light and continued the identification by Polymerase Chain Reaction (PCR) method.

Polymerase Chain Reaction (PCR) amplification.

Polymerase Chain Reaction (PCR) identification process was conducted using 10 µl solution (Total 50 µl PCR reactant) consist of DNA as template, megamix blue kit for amplification and primer 27F (5'-AGA GTT TGA TCC TGG CTC CG-3') and reverse primer 1492 R (5'-TAC GGH TAC CTT GTT ACG ACT T-3'). Early denaturation was carried out at 96°C for 4 minutes, followed by DNA duplication at 94°C for 1 minute, aneling at 51.5°C for 1.30 seconds and extension at 68°C for 8 minutes continued with last extension at 68°C for 10 minutes.

Electrophoresis using polyacrilamide gel 80%.

Polyacrilamide gel which consist of 12.5 ml aquabidest, 5.3 ml polyacrilamide 30%, 2 ml TBE (Tris Borat – EDTA) and 20 µl TEMED. 5 µl of electrophoresis PCR result were homogenised using 1µl loading dye and filled into gel well with retention of 70 volt for 2.5 hours with TBE buffer solution media one time only.

Sequencing purification

Sequencing purification was conducted using 10 µl mixture in PCR tube added with 1µl natrium acetate 3 M and 25 µl cold ethanol absolute (-20°C) and mixed thoroughly using vortex for 10 minutes. Samples were then kept at ambient temperature to settle down before centrifuged at 15,000 rpm for 20 minutes and 4°C. Supernatant were discarded, then 10 µl ethanol 70% were added with slow agitation before recentrifuged at 15.000 rpm for 15 minutes, 4°C. Supernatant were discarded and residue of ethanol in sample were evaporated using vacuum evaporator for 10 minutes and then 10 µl formamide added before mixed with vortex and rinsed. As much as 10 µl purified PCR result were filled in PCR tube or tray and put into sequencer genetic analyzer. The DNA sequence were read at TH analyzer and copied to the bioedit program and conducted blasting at DDBJ/NCBI to observe the sequence similarity. Based on that result then phylogenic tree were constructed using MEGA 5.2 with Neighbor Joining (NJ) method.

Phylogenic tree reconstruction

Reconstruction were carried out by

comparing 16S rRNA gen sequence from selected pickled ginger sample isolate with 16SrRNA gen sequence from standard strain obtained from gen database DNA bank (<http://www.ncbi.nlm.nih.gov>) using MEGA 5.2. program.

Statistical analysis

Data on the above parameters was taken in triplicate and analyzed statistically by using Randomized Complete Block Design (RCBD) while means were separated by Least Significant Difference (LSD) test at 5% level of significance as described by Steel and Torrie (1997).

Results and Discussion.

Determination of pH value, total acidity number and LAB total counts of pickled ginger.

The pH value, total acidity and Lactic Acid Bacteria (LAB) total counts of pickled ginger prepared using different salt concentration and fermentation time are presented in Table 1. The lowest pH value (3.33) was observed in pickled ginger prepared using 2.5% salt for 10 days, while highest pH value (4.77) was observed in pickled ginger prepared using 7.5% salt for 5 days. The total acidity and total LAB count were decreasing if salt concentrations were increased and longer fermentation time.

The higher salt concentration (2.5% - 7.0%) did not decreasing the pH value of sample although at longer fermentation time, however it affected either total acidity number as well as total LAB count at 5 and 10 days of fermentation. Chia *et al.* (1982) reported that high salt (NaCl) content up to 5% (w/v) added during fermentation of sugars by yeasts showed that yeasts growth was decreased and observed that the effect on semisolid culture were similar to liquid culture. Furthermore Tabatabaei-Yazdi *et al.* (2013) noted that salt concentration added affected the growth, activity as well as the role of microorganisms involved during fermentation process. The higher pH values after 5 and 10 days of fermentation with 5% and 7.5% salt concentration reduced the total LAB as well hence the acidity numbers were also decreased. Therefore the best pickled ginger obtained was the one using 2.5% salt and 5 days of fermentation although same concentration of salt and 10 days of fermentation showed a similar results from the point of view of pH value, total acidity number and total LAB counts.

LAB identification based on electrophoresis, Polymerase Chain Reaction and phylogenic tree reconstruction

DNA of LAB isolated from the best pickled ginger sample and PCR amplification were

Table 1. Physicochemical and microbial quality traits of pickled ginger prepared using different salt concentration and fermentation time*

Salt concentration	Fermentation time, d	pH	Total acidity	TPC LAB
%				CFU/ml x 10 ⁶
2.5	5	3.47 ± 0.06 ^{ab}	0.92 ± 0.01 ^d	7.56 ± 1.15 ^c
2.5	10	3.33 ± 0.12 ^a	0.93 ± 0.01 ^d	7.49 ± 0.30 ^c
5.0	5	4.13 ± 0.12 ^{abc}	0.53 ± 0.01 ^{bc}	6.50 ± 0.21 ^{bc}
5.0	10	4.13 ± 0.06 ^{ab}	0.52 ± 0.01 ^{bc}	6.83 ± 0.23 ^{bc}
7.5	5	4.77 ± 0.21 ^c	0.52 ± 0.01 ^{bc}	5.68 ± 0.80 ^{ab}
7.5	10	4.40 ± 0.17 ^{bc}	0.50 ± 0.01 ^a	4.46 ± 0.41 ^a

) means with standard deviation followed by same superscript in one column was significant difference (P < 0.05) and means were measurement from three different samples.

determined using electrophoresis and the result are presented in Figure 1. The identification were then continued using Polymerase Chain Reaction (PCR) 16SrRNA program and Neighbour Joining (NJ) method to construct phylogenic tree in order to find out percentage of similarity between the sequences obtained with 16SrDNA from the nucleotide databases from the Genbank (<http://www.ncbi.nlm.nih.gov/BLAST>) using the Basic Local Alignment Search Tool (BLAST) program.

The size of PCR product of DNA isolated from best pickled ginger sample as measured using electrophoresis were about 1500bp as showed in Figure 1. and the sequencing analysis result of LAB isolate from pickled ginger prepared using 2.5% salt and 5 days fermentation are as follow:

GCATAGCGTCACCGTTGTGTCTCATGTTACGGTGGCGGGTACACGGA
 CTGCGCGGATCCTAAGTGCACCGAACTTAGTGCTGAGTGCCCATCTT
 TGGTCCCCTAGCGATGTGCCCTCGTGTCCGACGCAATCTGAGAA
 TCGGGACCCGACAGCTGAGACAGCCGTAGTCAATCTTTAGACATATT
 GAACTGTAGTTGTATAAACACCCGGCGCCGAATCTGAGCTTGC
 CGATGGCGAAGCAGCGTGTAGCTGAGGAACCTCCAACCTCATCGACGAC
 TGACGTCCTCGCGTAGTAAGACCCGGTCTTTACTACGCCGAGGA
 CGTTACCGTCCATCCGACTGGGAGGTTTCTCAGCTAACGCTGCTTC
 GCCATCGGCAAGCTCCAGATTGGGGCCAGGTCTGTGGTTAATCAAGA
 GCTCGTCTTACAATTAGAGAACTTCTGGCTGTGAGGTGATGTTCCCG
 CTCTCGTGATGGGTAGTCCCGACCTCGTCCATTTGGGCACTGTAC
 CCGGACCGAAGGTCACCATGCCTTAGACCTGGGTCCTCCGTCGGTT
 CACCAGTCACTCCAGAAACATATTTCTTCTGGACCTAA

The phylogenic tree construction using MEGA5.2 application with neighbour joining method and statistically test using bootstrap with 500 replication. Bootstrap method have the function of randomizing same bacteria characteristic into a new set of data with same amount of bacteria. Number below each

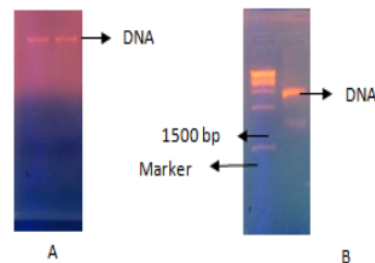


Figure 1. DNA spot detected using electrophoresis running by 5 µl loading dye 1 µl (A), and PCR 16S rRNA product which was running in the amount of 3 µl, loading dye 1 µl, and marker 1 kb vivantis 6 µl (B).

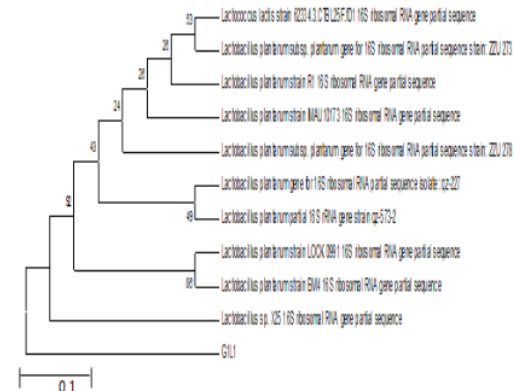


Figure 2. Phylogenetic tree based on 16S rRNA sequencing which showed similarity between LAB of sample prepared using 2.5% (w/w) salt and 5 days fermentation and comparison bacteria group obtained from NCBI.

phylogenetic tree is bootstrap value as level similarity of bacteria, and the sequencing reconstruction result could be find out by observing the similarity level of LAB sample with LAB standard at phylogenetic tree as shown in Figure 2. The result showed that LAB found in pickled ginger sample prepared using 2.5% salt and 5 days of fermentation was *Lactobacillus*

1 *plantarum* with similarity 92%. According to phylogenetic tree construction *Lactobacillus plantarum* strain BM4 and *Lactobacillus plantarum* LOCK 0091 have the similarity of 86%. According to Goodfellow dan O'Donnel (1993) a strain could be classified as one species if this strain has index imilarity of $\geq 70\%$. While Chang *et al.* (2011) and Swain *et al.* (2014) also observed *Lactobacillus plantarum* as one of LAB found after the third day of pickled ginger added with plum produced in Taiwan. The other LAB species reported were *Lactobacillus sakei*, *Lactococcus lactis* subsp. *Lactis* and *Weissella Cibaria*. Saeedi *et al.* (2015) noted that *Lactobacillus plantarum* is the major LAB identified at early stage and *Pediococcus pentosaceus* at later stage of winter salad fermentation.

Conclusion

Results showed that the selected pickled ginger is the one prepared using 2.5% w/w salt and fermented for 5 days at 26°C with pH value of 3.40, total acidity 0.92%, lactic acid bacteria total counts 7.56×10^6 CFU/ml. The 16S rRNA gene analysis and phylogenetic tree construction results showed that *Lactobacillus plantarum* strain BM4 and *Lactobacillus plantarum* LOCK 0091 have the similarity of 86% are lactic acid bacteria species identified in this sample.

References

- AOAC. 2000. Official Method of Analysis. 16th edition. Washington D.C: Association of Official Analytical Chemists.
- Aryanta, W. R. 2000. Review Traditional fermented foods in Indonesia. Japanese Journal of Lactic Acid Bacteria 10(3): 90 – 102.
- Chang, C. H., Chen, Y. S. and Yanagida, F. 2011. Isolation and characterisation of lactic acid bacteria from yan-jiang (fermented ginger), a traditional fermented food in Taiwan. Journal Science Food and Agriculture 91(10): 1746 – 1750.
- Chia, J. W., Tanner, R. D. and Malaney, G. W. 1982. Effect of Sodium Chloride on Bakers' Yeast Growing in Gelatin. Applied and Environmental Microbiology 43: 757-763.
- Chou, L. 2003. Chinese and Other Asian Pickles: Salads, Pickles, and Other Cold Foods. Flavor and Fortune 10(3): 19-38.
- De Garmo, E. P, Sullivan, W. G. and Canada, J. R. 1994. Engineering Economy. Seventh edition. New York: Macmillan Publishing Company.
- Goodfellow, M. And O'Donnel, A. G. 1993. The Roots of Bacterial Systematics. In Handbook of New Bacterial Systematics. M. Goodfellow and A. G. O'Donnel (Eds). London: Academic Press Ltd.
- Hadioetomo, R. S. 1993. Basic Microbiology in Practice (Mikrobiologi Dasar Dalam Praktek). Jakarta: PT. Gramedia Pustaka Utama.
- Law, S. V., Abu Bakar, F., Mat Hashim, D. and Abdul Hamid, A. 2011. MiniReview Popular fermented foods and beverages in Southeast Asia. International Food Research Journal 18: 475-484.
- Leonard, J. T., Grace, M. B., Buzard, G. S., Mullen, M. J. and Barbagallo, C. B. 1998. Preparation of PCR products for DNA sequencing. BioTechniques 24(2): 314-317
- Nath, A., Deka, B. C., Jha, A. K., Paul, D. and Misra, L. K. 2013. Effect of slice thickness and blanching time on different quality attributes of instant ginger candy. Journal Food Science and Technology 50(1):197–202.
- Purnomo, H., Jaya, F. and Widjanarko, S. B. 2010. The effects of type and time of thermal processing on ginger (*Zingiber officinale* Roscoe) rhizome antioxidant compounds and its quality. International Food Research Journal 17: 335-347.
- Saeedi, M., Shahidi, F., Mortazavi, S. A., Milani, E. and Yadz, F. T. 2015. Isolation and Identification of Lactic Acid Bacteria in winter salad (local pickle) during fermentation using 16S rRNA gene sequence analysis. Journal Food Safety 2015 : 1 – 8.
- Setyaningsih, D. 1993. Study on the Quality and Storage Life Improvement of Pickled Ginger (*Zingiber officinale* Rosc.). Bogor, Indonesia: Bogor Agriculture Institute, MSc thesis.
- Singh, S. K., Patel, J. R. and Bachle, D. 2014. A Review on Zingiber officinale: a natural gift. International Journal of Pharmacology and Biological Science 5 (3): 508 – 525.
- Steel, R. G. D. and Torrie, J. H. 1997. Principles and procedures of statistics. Mc. Graw Hill Pub. Co. Inc. New York 3: 34-42.
- Sulistiani, Abinawanto, Sukara, E., Salamah, A., Dinoto, A. and Mangunwardoyo, W. 2014. Identification of lactic acid bacteria in sayur asin from Central Java (Indonesia) based on 16S rDNA sequence. International Food Research Journal 21(2): 527-532.
- Swain, M. R., Anandharaj, M., Ray, R. C. and Rani, R. P. 2014. Fermented Fruits and Vegetables of Asia: A Potential Source of Probiotics. Biotechnology Research International 2014 : 1 - 19.
- Tabatabaei-Yazdi, F., Alizadeh-Behbahani, B. and Mortazavi, A. 2013. Effect of temperature and salt concentration on microbial changes during Tarkhineh fermentation. Scientific Journal of Biological Sciences 2(1): 8 - 16.
- Tamang, J. P. 2011. Prospects of Asian Fermented Foods in Global Markets. Paper presented in The 12th ASEAN Food. Bangkok: Thailand BITEC Bangna.
- Yeh, H. Y., Chuang, C. H., Chen, H. C., Wan, C. J., Chen, T. I. and Lin, L. Y. (2014). Bioactive components analysis of two various gingers (*Zingiber officinale* Roscoe) and antioxidant effect of ginger extracts. LWT — Food Science and Technology 55: 329–334.
- Yelnetty, A. 2014. Potential of Isolated Lactic Acid Bacteria from Spontaneous Fermented Local Goat Milk as Probiotic Bacteria for Production of Functional Goat

- 1
Milk Yoghurt Drink. Malang, Indonesia: Brawijaya University, Doctor thesis.
- Zadeh, J. B. and Kor, N. K. 2014. Physiological and pharmaceutical effects of Ginger (*Zingiber officinale* Roscoe) as a valuable medicinal plant. *European Journal of Experimental Biology* 4(1):87-90.

ORIGINALITY REPORT

99%

SIMILARITY INDEX

99%

INTERNET SOURCES

22%

PUBLICATIONS

28%

STUDENT PAPERS

PRIMARY SOURCES

1

www.ifrj.upm.edu.my

Internet Source

99%

Exclude quotes Off

Exclude matches Off

Exclude bibliography Off



YAYASAN PERGURUAN TINGGI KATOLIK "ADISUCIPTO" MALANG
UNIVERSITAS KATOLIK WIDYA KARYA MALANG
STATUS TERAKREDITASI

FAKULTAS

1. EKONOMI & BISNIS
 2. PERTANIAN
 3. TEKNIK
 4. HUKUM
- PROGRAM DIPLOMA III

PROGRAM STUDI / PROGRAM STUDI

1. MANAJEMEN
 1. TEKNOLOGI PANGAN
 1. TEKNIK MESIN
 1. HUKUM
 1. SISTEM INFORMASI
2. AKUNTANSI
 2. AGRIBISNIS
 2. TEKNIK SIPIL
 2. ADMINISTRASI PERKANTORAN

Kantor : Jl. Bondowoso No. 2 Malang 65115 Telp. (0341) 554418 P.O. Box 121 Situs Web : www.widyakarya.ac.id, ukwk.siakadcloud.com/spmbfront •E-mail : widyakarya@widyakarya.ac.id

SURAT KLARIFIKASI CEK PLAGIASI DAN INDEKS *PRIMARY SOURCES*

Nomor: 004/TIM-JAFA//IV/2023

Saya yang bertanda tangan di bawah ini:

Nama : **Dr. Dra. Silvia Indrarini, Ak., M.M.**
NIK : 199301210027
Pangkat/Gol. Ruang : Penata/ Golongan IIIc
Jabatan Akademik : Lektor
Jabatan : Ketua Tim Penilai Jabatan Akademik Dosen Universitas Katolik Widya Karya Malang

dengan ini menyatakan klarifikasi perihal hasil cek plagiasi menunjukkan angka di atas 25% dan indeks *primary sources* di atas 3%, terhadap hasil publikasi atas:

Nama : **Ir. Sri Susilowati.,MP**
NIK : 199002210014
Pangkat / Gol. Ruang : Penata Muda/IIIa
Jabatan Akademik : Asisten Ahli
Jabatan : Dosen Prodi Teknologi Pangan Universitas Katolik Widya Karya Malang

bahwa cek plagiasi menggunakan software Turnitin, dengan hasil publikasi serta alasan klarifikasi dijelaskan sebagai berikut:

No	Hasil Publikasi	Alasan Klarifikasi
1	<p>Judul: The effect of salt concentration and fermentation time on pH value, total acidity and microbial characteristic of pickled ginger (<i>Zingiber officinale</i> Rosc.).</p> <p>Penulis: Susilowati, S., Laia, S. and Purnomo, H</p> <p>Nama Jurnal: International Food Research Journal</p> <p>Volume Jurnal: 25 Nomor(6)</p> <p>Terbit Jurnal: December 2018</p> <p>Halaman: 2301-2306</p> <p>ISSN: 2231-7546</p> <p>Penerbit: Faculty of Food Science & Technology, UPM.</p>	<p>Bahwa Jurnal telah terbit pada bulan December 2018, sedangkan pengecekan plagiasi dilakukan oleh International Food Research Journal tanpa diberikan hasil plagiasi kepada penulis dan dinyatakan lulus plagiasi. Pengecekan plagiasi dilakukan kembali menggunakan software Turnitin pada tanggal 08 April 2023, dan didapatkan hasil plagiasi 99%. Hal ini disebabkan jurnal telah terpublikasi dan tersimpan pada www.ifrj.upm.edu.my sebesar 99%, dimana jurnal International Food Research Journal juga terindeks pada alamat URL tersebut.</p> <p>Link Plagiasi:</p>



YAYASAN PERGURUAN TINGGI KATOLIK "ADISUCIPTO" MALANG
UNIVERSITAS KATOLIK WIDYA KARYA MALANG
STATUS TERAKREDITASI

FAKULTAS

1. EKONOMI & BISNIS
 2. PERTANIAN
 3. TEKNIK
 4. HUKUM
- PROGRAM DIPLOMA III

PROGRAM STUDI / PROGRAM STUDI

- | | |
|---------------------|-----------------------------|
| 1. MANAJEMEN | 2. AKUNTANSI |
| 1. TEKNOLOGI PANGAN | 2. AGRIBISNIS |
| 1. TEKNIK MESIN | 2. TEKNIK SIPIL |
| 1. HUKUM | |
| 1. SISTEM INFORMASI | 2. ADMINISTRASI PERKANTORAN |

Kantor : Jl. Bondowoso No. 2 Malang 65115 Telp. (0341) 554418 P.O. Box 121 Situs Web : www.widyakarya.ac.id, ukwk.siakadcloud.com/spmbfront E-mail : widyakarya@widyakarya.ac.id

	<p>URL: http://www.ifrj.upm.edu.my/volume-25-2018.html</p>	<p>https://drive.google.com/file/d/17jpuFFWAJs9GB--ZjtFRnDvteqJf_ath/view?usp=share_link</p>
2	<p>Judul: Evaluasi Warna dan Stabilitas Antosianin Ubi Jalar Ungu dalam Minuman Ringan Isotonik</p> <p>Penulis: Sri susilowati dan Handini</p> <p>Nama Jurnal: Jurnal WAWASAN (Wahana Wacana Hasil Analisis)</p> <p>Volume Jurnal: No. 1</p> <p>Terbit Jurnal: Juli 2014</p> <p>Halaman: 58 - 65</p> <p>ISSN: 0854-4948</p> <p>Penerbit: Lembaga Penelitian Dan Pengabdian Kepada Masyarakat Universitas Katolik Widya Karya Malang</p> <p>URL: http://lppm.widyakarya.ac.id/wawasan-volume-ii-no-1-issn-0854-4948-m-sri-susilowati-handini/</p>	<p>Bahwa Jurnal telah terbit pada bulan Juli 2014 sedangkan pengecekan plagiasi dilakukan oleh Jurnal WAWASAN tanpa diberikan hasil plagiasi kepada penulis dan dinyatakan lulus plagiasi. Pengecekan plagiasi dilakukan kembali menggunakan software Turnitin pada tanggal 08 April 2023, dan didapatkan hasil plagiasi 38%. Hal ini disebabkan karena artikel teindeks plagiasi dari judul artikel lain yang telah terpublikasi pada tahun 2014, dimana jurnal WAWASAN juga terindeks pada alamat URL tersebut.</p> <p>Link Plagiasi: https://drive.google.com/file/d/16vJcs4qMy8wYtkyHDsvun6aaTqkh3Vxp/view?usp=share_link</p>
3	<p>Judul: PENGARUH SUHU AIR PERENDAMAN DAN LARUTAN PENYEGAR PADA BUNGA MAWAR POTONG</p> <p>Penulis: Sri susilowati</p> <p>Nama Jurnal: Jurnal WAWASAN (Wahana Wacana Hasil Analisis)</p> <p>Volume Jurnal: III, Nomor 1</p> <p>Terbit Jurnal: Juli 2015</p> <p>Halaman: 11 - 22</p> <p>ISSN: 0854-4948</p> <p>Penerbit: Lembaga Penelitian Dan Pengabdian Kepada Masyarakat Universitas Katolik Widya Karya Malang</p> <p>URL: http://lppm.widyakarya.ac.id/wawasan-vol-iii-1-sri-susilowati/</p>	<p>Bahwa Jurnal telah terbit pada bulan Juli 2015 sedangkan pengecekan plagiasi dilakukan oleh Jurnal WAWASAN tanpa diberikan hasil plagiasi kepada penulis dan dinyatakan lulus plagiasi. Pengecekan plagiasi dilakukan kembali menggunakan software Turnitin pada tanggal 08 April 2023, dan didapatkan hasil plagiasi 54%. Hal ini disebabkan karena artikel teindeks plagiasi dari judul artikel lain yang telah terpublikasi pada tahun 2015, dimana jurnal WAWASAN juga terindeks pada alamat URL tersebut.</p> <p>Link Plagiasi: https://drive.google.com/file/d/1qWzeMtWXwN6xADb1uJLE2SIYy8ftOxLc/view?usp=share_link</p>
4	<p>Judul: OBSERVASI PENANGANAN AWAL BAHAN PANGAN DI PASAR MODERN DAN TRADISIONAL KOTA MALANG</p>	<p>Bahwa Jurnal telah terbit pada bulan Juni 2020 sedangkan pengecekan plagiasi dilakukan oleh Jurnal Bistek Pertanian tanpa diberikan hasil plagiasi kepada penulis dan dinyatakan lulus</p>



YAYASAN PERGURUAN TINGGI KATOLIK "ADISUCIPTO" MALANG
UNIVERSITAS KATOLIK WIDYA KARYA MALANG
STATUS TERAKREDITASI

FAKULTAS

1. EKONOMI & BISNIS
 2. PERTANIAN
 3. TEKNIK
 4. HUKUM
- PROGRAM DIPLOMA III

PROGRAM STUDI/ PROGRAM STUDI

- | | |
|---------------------|-----------------------------|
| 1. MANAJEMEN | 2. AKUNTANSI |
| 1. TEKNOLOGI PANGAN | 2. AGRIBISNIS |
| 1. TEKNIK MESIN | 2. TEKNIK SIPIL |
| 1. HUKUM | |
| 1. SISTEM INFORMASI | 2. ADMINISTRASI PERKANTORAN |

Kantor : Jl. Bondowoso No. 2 Malang 65115 Telp. (0341) 554418 P.O. Box 121 Situs Web : www.widyakarya.ac.id, ukwk.siakadcloud.com/spmbfront *E-mail : widyakarya@widyakarya.ac.id

	<p>Penulis: Sri susilowati Nama Jurnal: Jurnal Bistek Pertanian Volume Jurnal: VII, Nomor 1 Terbit Jurnal: Juni 2020 Halaman: 47- 60 ISSN: 2721-4699 Penerbit: Fakultas Pertanian Universitas Katolik Widya Karya Malang URL: https://bistek.journalwidyakarya.ac.id/index.php/bistek/issue/view/4</p>	<p>plagiasi. Pengecekan plagiasi dilakukan kembali menggunakan software Turnitin pada tanggal 12 April 2023, dan didapatkan hasil plagiasi 39%. Hal ini disebabkan karena atikel teindeks plagiasi dari judul artikel lain yang telah terpublikasi pada tahun 2020, dimana jurnal Bistek Pertanian juga terindeks pada alamat URL tersebut. Link Plagiasi: https://drive.google.com/file/d/1NDNoEpm1MAq8QB4xqG7ZY2HnGBPyyvEtD/view?usp=share_link</p>
5	<p>Judul: UJI KIMIA, MIKROBIOLOGI DAN ORGANOLEPTIK "INDONESIAN SAUERKRAUT" DENGAN CABAI DAN BAWANG PUTIH Penulis: Sri Susilowati , Handini Nama Prosiding: Seminar Nasional dan Gelar Produk SENASPRO 2016 Terbit Jurnal; 17 oktober 2016. ISBN; 978-979-796-2234 Penerbit: Universitas Muhammadiyah Malang Developed by Infokom Universitas Muhammadiyah Malang URL: https://dp2m.umm.ac.id/id/pengumuman/seminar-nasional-dan-gelar-produk-senaspro-2016-basement-domeumm-malang-1718-oktober-2016.html</p>	<p>Bahwa Publikasi prosiding telah terbit pada 16 oktober 2016, sedangkan pengecekan plagiasi dilakukan oleh panitia penyelenggara tanpa diberikan hasil plagiasi kepada penulis. Pengecekan plagiasi dilakukan kembali menggunakan software Turnitin pada tanggal 08 April 2023, dan didapatkan hasil plagiasi sebesar 98%. Hal ini disebabkan karena artikel teindeks plagiasi dari judul artikel lain yang telah terpublikasi pada tahun 2016, dimana Seminar Nasional dan Gelar Produk SENASPRO 2016 juga terindeks pada alamat URL tersebut. Link Plagiasi: https://dp2m.umm.ac.id/id/pengumuman/seminar-nasional-dan-gelar-produk-senaspro-2016-basement-domeumm-malang-1718-oktober-2016.html</p>
6	<p>Judul Artikel: LABELING KEMASAN PRODUK MINUMAN SARI APEL DI KELOMPOK TANI PALAPA DESA WRINGINANOM KECAMATAN PONCOKUSUMO Penulis: Sri Susilowati dan Maria Puri Nurani Nama Jurnal: Jurnal Warta Abdimas Volume Jurnal: no 2 vol 2 Terbit Jurnal: Desember 2019 Halaman: 120-130 ISSN: 2654-2897</p>	<p>Bahwa Jurnal telah terbit pada bulan Desember 2019 sedangkan pengecekan plagiasi dilakukan oleh Jurnal Warta Abdimas tanpa diberikan hasil plagiasi kepada penulis dan dinyatakan lulus plagiasi. Pengecekan plagiasi dilakukan kembali menggunakan software Turnitin pada tanggal 08 April 2023, dan didapatkan hasil plagiasi 99%. Hal ini disebabkan jurnal telah terpublikasi dan tersimpan pada portal.widyamandala.ac.id sebesar 99%, dimana jurnal Warta Abdimas terindeks pada</p>



YAYASAN PERGURUAN TINGGI KATOLIK "ADISUCIPTO" MALANG
UNIVERSITAS KATOLIK WIDYA KARYA MALANG
STATUS TERAKREDITASI

FAKULTAS

1. EKONOMI & BISNIS
 2. PERTANIAN
 3. TEKNIK
 4. HUKUM
- PROGRAM DIPLOMA III

PROGRAM STUDI/ PROGRAM STUDI

1. MANAJEMEN
 1. TEKNOLOGI PANGAN
 1. TEKNIK MESIN
 1. HUKUM
 1. SISTEM INFORMASI
2. AKUNTANSI
 2. AGRIBISNIS
 2. TEKNIK SIPIL
 2. ADMINISTRASI PERKANTORAN

Kantor : Jl. Bondowoso No. 2 Malang 65115 Telp. (0341) 554418 P.O. Box 121 Situs Web : www.widyakarya.ac.id, ukwk.siakadcloud.com/spmbfront *E-mail : widyakarya@widyakarya.ac.id

	<p>Penerbit: LP3M Unika Widya Mandala Madiun</p> <p>URL: http://portal.widyamandala.ac.id/jurnal/index.php/abdimas/article/view/862/765</p>	<p>alamat URL tersebut.</p> <p>Link Plagiasi:</p> <p>https:</p> <p>https://drive.google.com/file/d/1QUEG_Qkp-B7wXYWhHblE3n6kfdHgclNny/view?usp=share_link</p>
7	<p>Judul Artikel: Pelatihan Pengolahan Minuman Jaselang dan Pengemasan Produk pada PKK RW 05 kelurahan Gading Kasri, Kecamatan Klojen, Kota Malang</p> <p>Penulis: Handini, Sri Susilowati</p> <p>Nama Jurnal: ASAWIKA</p> <p>Volume Jurnal: 1 No. 1</p> <p>Terbit Jurnal: november 2016</p> <p>Halaman: 48-58</p> <p>ISSN: 2597-7210</p> <p>Penerbit: LPPM Universitas Katolik Widya Karya Malang</p> <p>URL: https://lppm.widyakarya.ac.id/asawika-volume-1-november-2016/</p>	<p>Bahwa Jurnal telah terbit pada bulan november 2016 sedangkan pengecekan plagiasi dilakukan oleh ASAWIKA tanpa diberikan hasil plagiasi kepada penulis dan dinyatakan lulus plagiasi. Pengecekan plagiasi dilakukan kembali menggunakan software Turnitin pada tanggal 08 April 2023, dan didapatkan hasil plagiasi 74%. Hal ini disebabkan karena artikel teindeks plagiasi dari judul artikel lain yang telah terpublikasi, dimana jurnal ASAWIKA terindeks pada alamat URL tersebut.</p> <p>Link Plagiasi:</p> <p>https://drive.google.com/file/d/1rz-ak19NPWWPaR0Q45gyAJaxUDwpLbf_/view?usp=share_link</p>

Secara garis besar bahwa hasil publikasi telah terpublikasi antara tahun 2014-2020 dan pada tanggal 8 dan 12 April 2023 dilakukan cek plagiasi kembali, dikarenakan bukti plagiasi dilakukan oleh pemilik jurnal dan hasilnya tidak diberikan kepada penulis pada saat jurnal akan diterbitkan.

Demikian surat klarifikasi ini dibuat dengan sebenarnya untuk diketahui dan dipergunakan sebagaimana mestinya.

Malang, 14 April 2023

Ketua Tim Penilai Jabatan Akademik Dosen
Universitas Katolik Widya Karya Malang



Silvia

Dr. Dra. Silvia Indrarini, Ak., M.M.

NIK: 199301210027